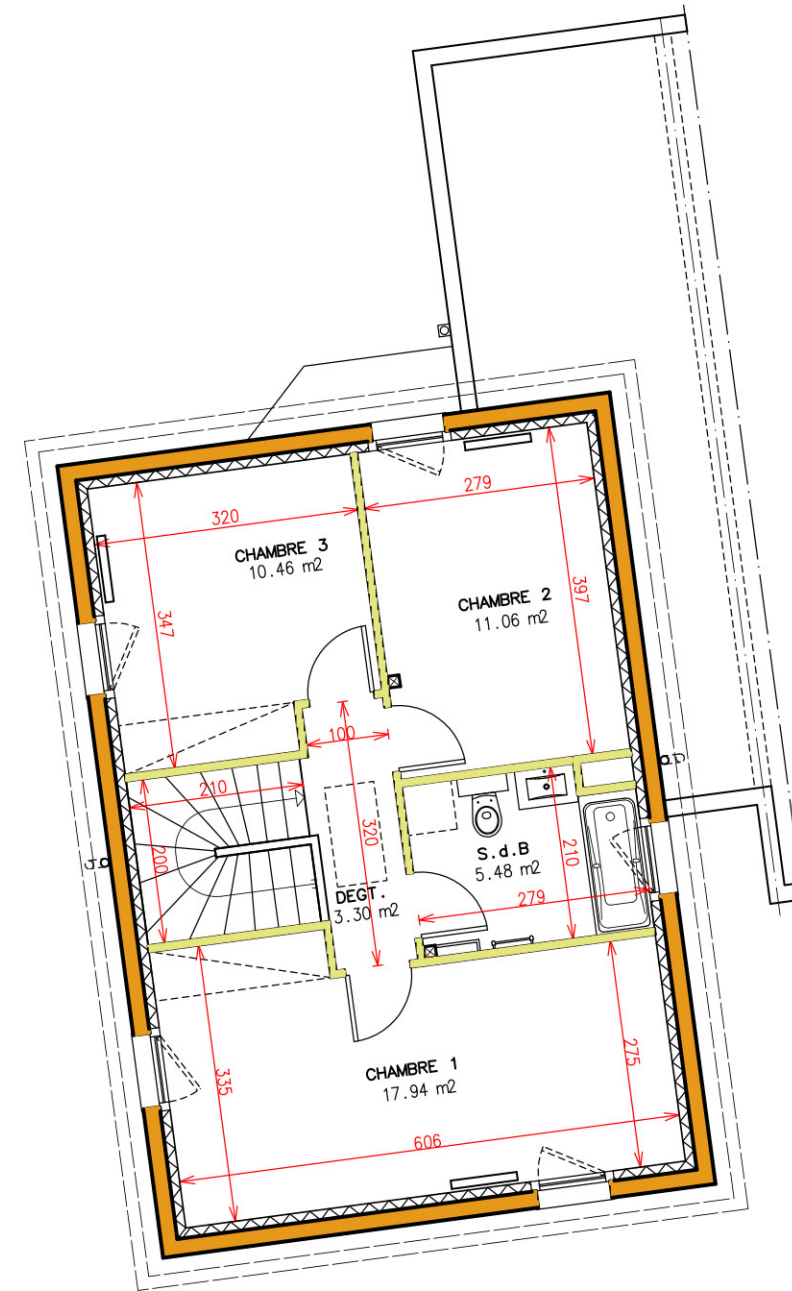
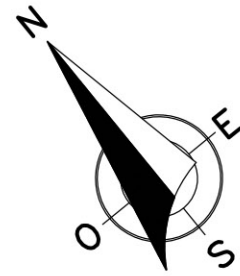
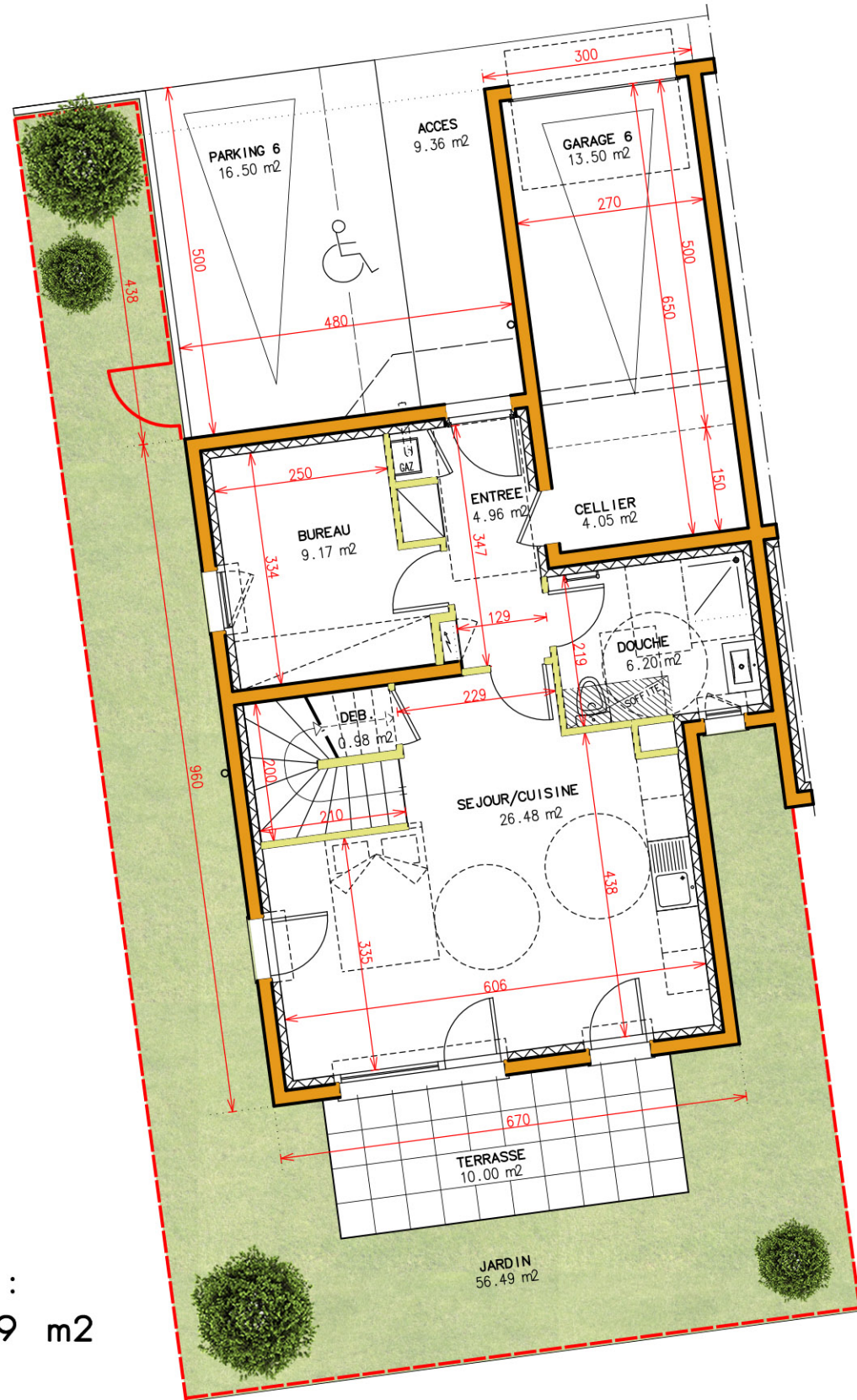


Idéo à DRUSENHEIM

SURFACE FONCIÈRE
Environ 180 m²

Lot n°6 - T5 de 96.03 m²



Pièces	Surfaces Habitable
Entrée	4.96 m ²
Séjour/Cuisine	26.48 m ²
Douche/WC	6.20 m ²
Debarras	0.98 m ²
Dégagement	3.30 m ²
Bureau	9.17 m ²
Chambre 1	17.94 m ²
Chambre 2	11.06 m ²
Chambre 3	10.46 m ²
S.d.B/WC	5.48 m ²
TOTAL	96.03 m²

Surfaces annexes

Garage	13.50 m ²
Cellier	4.05 m ²
Terrasse	10.00 m ²
Jardin	56.49 m ²
Accès	9.36 m ²
Parking	16.50 m ²

