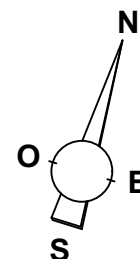
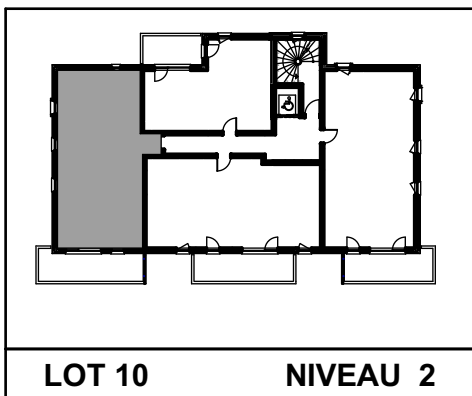
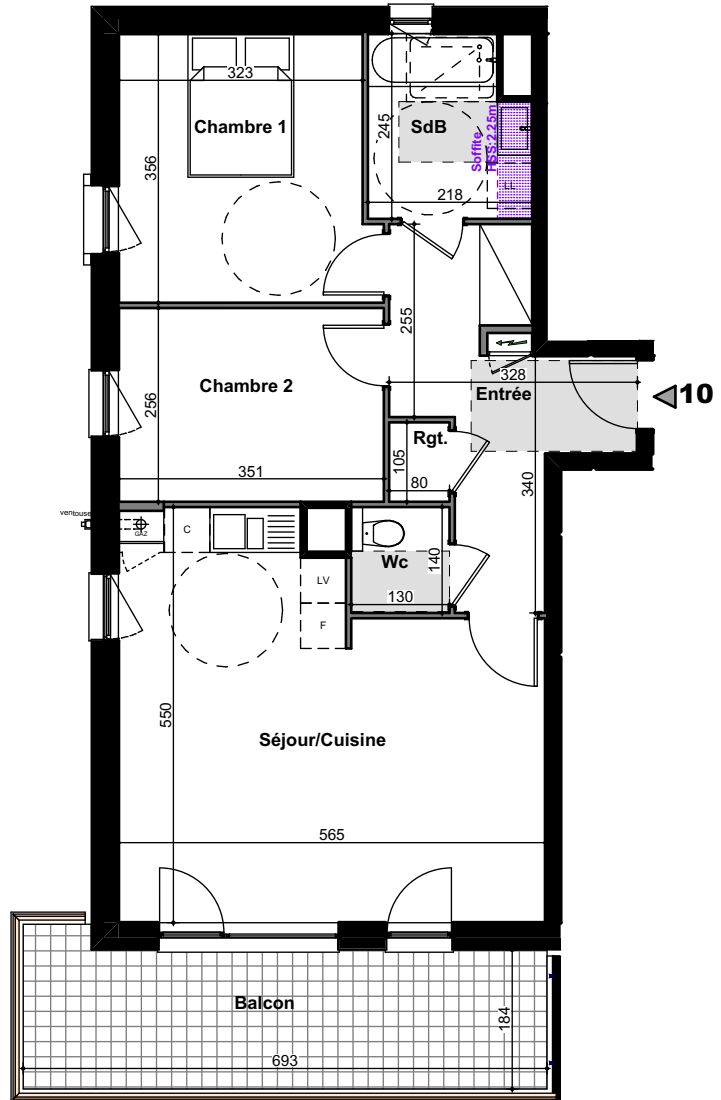


**BATIMENT 1**  
**3 PIECES - NIVEAU 2**  
**LOT 10**

ENTREE / PLACARD	:	9.39 m <sup>2</sup>
SEJOUR / CUISINE	:	26.72 m <sup>2</sup>
CHAMBRE 1	:	11.79 m <sup>2</sup>
CHAMBRE 2	:	9.00 m <sup>2</sup>
SDB	:	4.92 m <sup>2</sup>
WC	:	1.82 m <sup>2</sup>
RANGEMENT	:	0.84 m <sup>2</sup>

**TOTAL HABITABLE** : **64.48 m<sup>2</sup>**

SURFACE BALCON : 13.06 m<sup>2</sup>



BIK Architecture Grand Est  
 Date : 30/01/2019