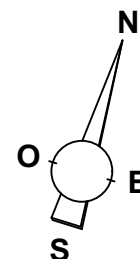
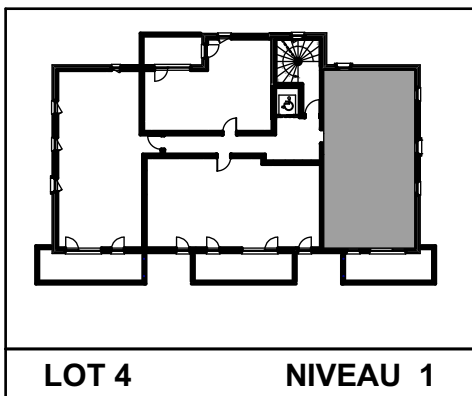
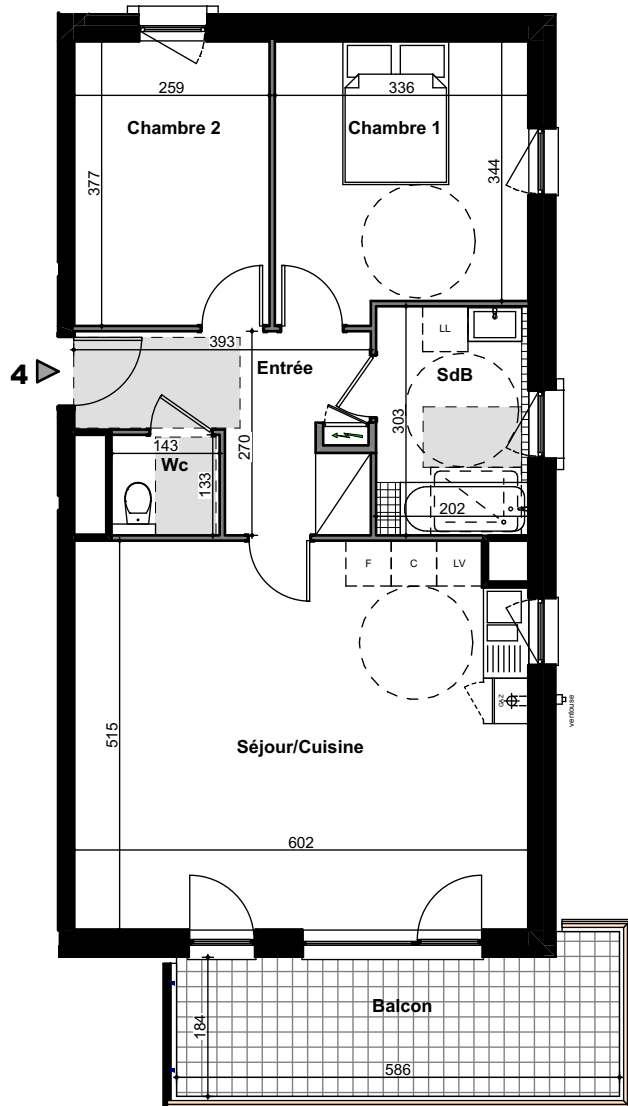


BATIMENT 1
3 PIECES - NIVEAU 1
LOT 4

ENTREE / PLACARD	:	7.52 m ²
SEJOUR / CUISINE	:	30.62 m ²
CHAMBRE 1	:	11.98 m ²
CHAMBRE 2	:	9.77 m ²
SDB	:	6.12 m ²
WC	:	1.90 m ²

TOTAL HABITABLE : 67.91 m²

SURFACE BALCON : 11.07 m²



BIK Architecture Grand Est
 Date : 30/01/2019